



[www.ikh.fi](http://www.ikh.fi)

# BLADES FOR SAWS, CIRCULAR SAWS, ROUTERS

21





www.ikh.fi

## 21. BLADES FOR SAWS, CIRCULAR SAWS, ROUTERS

Bandsaw blade .....	5
Blades for turning saws .....	8
Bow saw blades .....	8
Circular saw blades .....	10,11
Cutter bit set .....	9
Hacksaw blades .....	2,8
Hole drills 2-legs .....	7
Hole saws .....	3,6,7
Holesaw mandrels .....	2,3,6
Jig saw blades .....	3,6,7
Magnetic jig sets for electric boxes .....	7
Router bits .....	9
Sabre saw blades .....	5



# HACKSAW BLADES

**ULTRA®**


## Ultra Flex Super

**UL303**

- for DIY use
- dimensions: 300 x 13 x 0,16 mm
- teething: 10/cm – 24/inch
- alloy steel, hard tempered teeth
- flexible, durable and easy to use
- for aluminium, PVC-pipes, wood
- packing size: /100
- EAN 3321670000181



## Ultra Trilenium Cobalt

**UL302**

- for industrial and professional use
- dimensions: 300 x 13 x 0,65 mm
- teething 10/cm – 24/inch
- blade HSS Super high speed steel with cobalt, hard tempered teeth
- flexible, long-life and multipurpose blade
- easy start of sawing > especially for pipes
- for aluminium alloy, copper-and steel pipes
- packing size: /100
- EAN 33216700067375

## Ultra Bi-Hard Cobalt

- for industrial and professional use
- dimensions 300 x 13 x 0,65 mm
- teething 10/cm – 24/inch
- blade HSS cobalt alloy, hard tempered teeth
- flexible, precise and durable blade
- steel, stainless steel



## BLADES 2 pcs / package

**UL301**

- 2 pcs of blades / package
- packing size: 1/50
- EAN 3321670009528


*Extremely flexible!*


## BLADES single packed

**UL300**

- packing size: /100
- EAN 3321670000075



## HACK SAW BLADES 10 kpl

**UL6010**

- length 150 mm
- suitable for e.g. UL62
- packing size: 1
- EAN 3321670000327



## HOLESAW MANDRELS

**UL002**

- fitted with Ø 6,35 mm HSS pilot drill
- 9,5 mm hexagonal driving shaft
- for 14 – 30 mm holesaws
- packing size: 1
- EAN 3321670039006



## HOLESAW MANDRELS

**UL003**

- fitted with Ø 6,35 mm HSS pilot drill
- 9,5 mm hexagonal driving shaft
- for 30 – 210 mm holesaws
- packing size: 1
- EAN 33216700071884



## HSS PILOT DRILL

**UL012**

- HSS pilot drill Ø 6,35 mm, length 81 mm
- fits for mandrels UL002 and UL003
- packing size: 1
- EAN 3321670003670

## EJECTOR SPRING

**UL011**

- ejector spring to clean off the cut piece
- fits for mandrels UL002 and UL003
- packing size: 1
- EAN 3321670003663



## EXTENSION BAR FOR MANDRELS

**ULSC5**

- length 330 mm
- 9,5 mm hexagonal driving shaft
- fits for mandrels UL002 and UL003
- packing size 1
- EAN 3321670003618



### HSS-Bi-metal HOLE SAWS

- for a wide range of applications from production and maintenance to the electrical and building trades
- for steel, brass, bronze, cast iron, aluminium and plastic
- made of hardened, heat- and wear resistant HSS – steel
- variable tooth pitch and length and teeth which are exactly in right angle reduces vibration
- cutting depth 34 – 38 mm
- packing size: 1

Order no.	Ø mm	EAN	Order no.	Ø mm	EAN
UL014	14,3	3321670002260	UL059	58,7	3321670002529
UL016	15,9	3321670002277	UL060	60,3	3321670002536
UL017	17,5	3321670002284	UL064	63,5	3321670002543
UL019	19,0	3321670002291	UL065	65,1	3321670002550
UL020	20,0	33216700030010	UL067	66,7	3321670002567
UL021	20,7	3321670002307	UL070	69,9	3321670002574
UL022	22,2	3321670002314	UL073	73,0	3321670002581
UL024	23,8	3321670002321	UL076	76,2	3321670002598
UL025	25,4	3321670002338	UL079	79,4	3321670002604
UL027	27,0	3321670002345	UL083	82,6	3321670002611
UL029	28,6	3321670002352	UL086	85,7	3321670002628
UL030	30,2	3321670002369	UL089	88,9	3321670002635
UL032	31,8	3321670002376	UL092	92,1	3321670002642
UL033	33,3	3321670002383	UL095	95,3	3321670002659
UL035	34,9	3321670002390	UL098	98,4	3321670002666
UL037	36,5	3321670002406	UL102	101,6	3321670002673
UL038	38,1	3321670002413	UL105	104,8	3321670002680
UL040	39,7	3321670002420	UL108	108,0	3321670002697
UL041	41,3	3321670002437	UL111	111,1	3321670002703
UL043	42,9	3321670002444	UL114	114,3	3321670002710
UL044	44,5	3321670002451	UL121	120,7	3321670002727
UL046	46,0	3321670002468	UL127	127,0	3321670002734
UL048	47,6	3321670002475	UL140	139,7	3321670002741
UL051	50,8	3321670002482	UL152	152,4	3321670002758
UL052	52,4	3321670002499	UL160	160,0	3321670071983
UL054	54,0	3321670002505	UL168	168,0	3321670071990
UL057	57,2	3321670002512	UL177	177,0	3321670072003
			UL210	210,0	3321670072010



### HSS-Bi-metal Electrician's HOLE SAW SET 19 – 65 mm

UL3836

- includes blades 19, 22 29, 35, 38, 44, 51, 57 and 65 mm
- packing size: 1
- EAN 3321670654889

#### HOLE SAWS

RECOMMENDED ROTATION SPEED FOR DIFFERENT MATERIALS:

Ø	Carbon steel	Stainless steel, Tool steel	Cast iron	Aluminium	Brass
14 - 25	580 - 350	300 - 175	400 - 235	900 - 480	790 - 435
27 - 51	325 - 170	160 - 85	215 - 115	480 - 255	435 - 230
52 - 76	175 - 105	80 - 55	110 - 80	240 - 180	220 - 160
79 - 102	110 - 85	55 - 40	75 - 55	170 - 110	150 - 100
105 - 21	80 - 40	40 - 20	55 - 25	110 - 60	100 - 60

#### HINTS:

Rotate the saw with recommended speed which is marked on the package. If possible, use variable-speed machine. For longer life and better finish it is recommended to use oil or coolant for most metals except cast iron. When sawing hard materials, it is recommended to remove the pilot drill as the saw is positioned – this reduces pressure and speeds up sawing.

### CARBIDE GRIT HOLE SAW TC

- carbide coated blade, steel body
- for ceramics, asbestos, tiles, bricks, slates
- cutting depth 35 – 40 mm
- NOT FOR PERCUSSION DRILLING
- packing size: 1

Order no.	Ø mm	EAN
ULK022	22,0	3321670003120
ULK032	31,8	3321670003182
ULK038	38,1	3321670003229
ULK040	39,7	3321670003236
ULK051	50,8	3321670003298
ULK060	60,3	3321670003342
ULK070	69,9	3321670003380
ULK076	76,2	3321670003403
ULK095	95,3	3321670003465
ULK102	101,6	3321670003489
ULK105	104,8	3321670003496
ULK114	114,3	3321670003526
ULK127	127,0	3321670003540



### MANDRELS FOR CARBIDE GRIT HOLE SAWS



ULK002

- with Ø 6,35 mm carbide tip drill
- 9,5 mm hexagonal driving shaft
- packing size: 1
- EAN 3321670072058



ULK003

- with Ø 6,35 mm carbide tip drill
- 9,5 mm hexagonal driving shaft
- packing size: 1
- EAN 3321670003717

#### CARBIDE GRIT HOLE SAWS

RECOMMENDED ROTATION SPEED FOR DIFFERENT MATERIALS:

Ø	Ceramics	Soft tile	Lasikuitu	Fenoli
14 - 25	680 - 380	1700 - 960	2380 - 1340	1020 - 580
27 - 51	360 - 190	905 - 480	1265 - 670	545 - 290
52 - 76	180 - 130	450 - 320	630 - 450	280 - 190
79 - 102	125 - 95	305 - 240	430 - 330	185 - 150
105 - 210	92 - 60	235 - 160	320 - 220	145 - 90



### MANDREL PILOT DRILL

ULK013

- carbide tip drill Ø 6,35 mm, length 117 mm
- for mandrels ULK002 and ULK003
- packing size: 1
- EAN 3321670003687

# JIG SAW BLADES



## Ultra Euro 8000

• for e.g. Metabo (MT06100, MT10900), Kress (KR500EST, KR650SPS), Robust (ROB7, ROB7A) Casals (CVC50, CVC65PE, CVC5002), AEG, Bosch, Holz-her, Elu, Hitachi, Makita, Peugeot, Dewalt



UL8001: Wood, plywood, PVC



UL8003: Wood, chipboard, PVC



UL8006: Wood, chipboard



UL80185: Wood, plywood (cuts down with stroke)

Order no.	Dimensions	Teeth/"	Material	Pcs/pack.	EAN
UL8001	100 x 2,5	10	CV	5	3321670000402
UL8003	100 x 3,0	8	CV	5	3321670000433
UL8006	100 x 4,0	6	CV	5	3321670000471
UL80185	100 x 2,5	10	CV	5	3321670000631



UL8009: Steel, copper, aluminium etc.



UL8011: Steel, copper, aluminium etc.

Order no.	Dimensions	Teeth/"	Material	Pcs/pack.	EAN
UL8009	76 x 1,2	21	HSS	5	3321670000518
UL8011	76 x 2,5	10	HSS	5	3321670000549

## ULTRA 8700

• for e.g. Makita, Black&Decker, Chervon



UL8701: steel 3 mm, aluminium etc.



UL8703: wood 30 mm, PVC



UL87052: wood, plywood 50 mm

Order no.	Dimensions	Teeth/"	Material	Pcs/pack.	EAN
UL8701	76 x 1,2	21	HSS	2	3321670001416
UL8703	91,5 x 3	8	CV	2	3321670001447
UL87052	91,5 x 4	6	CV	2	3321670001478
UL87055	91,5 x 4	6	CV	5	3321670001461

## JIG SAW BLADE SET 5-pcs

### UL8750

• for e.g. Makita, Black&Decker, Chervon  
 • blade assortment for sawing wood and metal  
 • includes blades:  
 -8701: 76 x 1,2 mm, HSS  
 -8703: 91,5 x 3 mm, CV  
 -8704: 91,5 x 3 mm, HSS  
 -8705: 91,5 x 4 mm, CV  
 -8706: 91,5 x 2,5 mm, CV  
 • packing size: 1/10  
 EAN 3321670001171



## Ultra Us 8600

• for e.g. Black&Decker, Hitachi, Ryobi, Skil, Stanley, Stayer, AWD (AWD60)



UL86012: Wood, plywood 60 mm



UL86032: Wood, plywood 60 mm, PVC



UL86062: Wood 30 mm



UL86185: Wood, plywood (cuts down with stroke)

Order no.	Dimensions	Teeth/"	Material	Pcs/pack.	EAN
UL86012	100 x 4	6	CV	2	3321670001102
UL86015	100 x 4	6	CV	5	3321670001096
UL86032	91,5 x 3	8	CV	2	3321670001133
UL86035	91,5 x 3	8	CV	5	3321670001126
UL86062	100 x 2,5	10	CV	2	3321670001188
UL86065	100 x 2,5	10	CV	5	3321670001171
UL86185	91,5 x 2,5	10	CV	5	3321670001300



UL86132: aluminium 10 mm, fibrocement



UL86152, UL86155: steel 4 mm, aluminium, copper 6 mm etc.

Order no.	Dimensions	Teeth/"	Material	Pcs/pack.	EAN
UL86132	91,5 x 3	8	HSS	2	3321670039600
UL86152	70 x 1,2	21	HSS	2	3321670001287
UL86155	70 x 1,2	21	HSS	5	3321670001270

## JIG SAW BLADE SET 5-pcs

### UL8650

• for e.g. Black&Decker, Hitachi, Skill, Stanley, AWD (AWD60)  
 • blade assortment for sawing wood and metal  
 • includes blades:  
 -8601: 100x4 mm, CV  
 -8603: 91,5 x 3 mm; CV  
 -8606: 100 x 2,5 mm, CV  
 -8613: 91,5 x 3 mm, HSS  
 -8615: 70 x 1,2 mm, HSS  
 • packing size: 1/10  
 EAN 3321670001126



## JIG SAW BLADE SET 5-pcs

### UL8050

• for e.g. Robust (ROB7, ROB7A) Casals (CVC50, CVC65PE, CVC5002), AEG, Bosch, Elu, Hitachi, Holz-Her, Makita, Metabo, Peugeot  
 • blade assortment for sawing wood and metal  
 • includes blades:  
 -8001: 100 x 2,5 mm, CV  
 -8003: 100 x 3,0 mm, CV  
 -8006: 100 x 4,0 mm, CV  
 -8013: 100 x 3,0 mm, HSS  
 -8009: 76 x 1,2 mm, HSS  
 • packing size: 1  
 EAN 3321670001621





## JIG SAW BLADE ASSORTMENT

### UL1001

• includes:

#### Ultra Euro 8000

- 10 sets UL8001 wood, plywood, PVC
- 10 sets UL8003 wood, chipboard, PVC
- 10 sets UL8006 wood, chipboard
- 10 sets UL8009 steel, copper, aluminium etc.
- 10 sets UL4011 steel, copper, aluminium etc.

#### Ultra 8700

- 10 sets UL87055 wood, chipboard

#### Ultra Us 8600

- 10 sets UL86015 wood, chipboard
- 10 sets UL86035 wood, chipboard, PVC
- 10 sets UL86065 wood
- 10 sets UL86155 steel, copper, aluminium

#### Jig saw blade sets:

- 10 sets UL8050 wood, metal
- 10 sets UL8650 wood, metal

#### Display stand UL1001A

- packing size: 1
- EAN 6418914503977

## SABRE SAW BLADES



### Ultra Precision



UL9001: plywood, wood with nails < 100 mm



UL9008: wood 180-250 mm



UL90095, UL900910: wood with nails, aluminium, copper < 150 mm etc.

Order no.	Dimensions mm*	Teeth/"	Material	Pcs/pack.	EAN
UL9001	150 x 0,8 / 2,5	10	chrome steel	5	3321670064145
UL9008	300 x 1,2 / 4,2	6	CV	5	3321670063995
UL90095	200 x 0,9 / 2,5	10	bimetal	5	3321670064046
UL900910	200 x 0,9 / 2,5	10	bimetal	10	3321670001867

\* overall length x thickness / pitch of teeth

### Ultra Extreme



UL9301: wood, PVC, aluminium profile < 100 mm



UL9302: wood, PVC, aluminium profile etc. 100 - 150 mm



UL9303: wood, PVC, aluminium profile etc. < 100 mm



UL9304: wood, ice, bone, meat < 330 mm

Order no.	Dimensions mm*	Teeth/"	Material	Pcs/pack.	EAN
UL9301	150 x 1,6 / 5	8	bimetal	5	3321670067337
UL9302	230 x 1,6 / 5	8	bimetal	5	3321670067344
UL9303	300 x 1,6 / 5	8	bimetal	5	3321670067351
UL9304	400 x 1,2 / 6,4	4	titanium coated	1	332167006724

\* overall length x thickness / pitch of teeth

### Ultra Speed



UL9102: steel < 3 mm, aluminium profile < 100 mm



UL9106: steel, aluminium 100-150 mm



UL9108: wood with nails, aluminium profile etc. 150-230 mm



UL9109: wood with nails, 100 - 130 mm, aluminium profile etc. 100 - 150 mm



UL9110: steel, aluminium 150 - 230 mm

Order no.	Dimensions mm*	Teeth/"	Material	Pcs/pack.	EAN
UL503	150 x 0,9 / 1,4	18	bimetal	5	3321670064039
UL504	200 x 0,9 / 1,4	18	bimetal	5	3321670068136
UL505	300 x 1,3 / 2,5	10	bimetal	10	3321670002161
UL506	200 x 0,9 / 2,5	10	bimetal	10	3321670068204
UL507	280 x 0,9 / 2,5	10	bimetal	10	3321670068211

\* overall length x thickness / pitch of teeth



## BANDSAW BLADE

### UL1000

- 1325 x 13 x 0,65
- packing size: 1
- EAN



## TCT SABRE SAW BLADES

- carbide-coated
- cuts large chipboard (OSB), composite, cellular concrete plaster board, fibrocement, glass fiber, hard wood and tile
- thickness 1,27 mm
- packing size: 1



Order no.	Length x width	Teeth/"	Cutting thickness glass fiber	Cutting thickness Composite	Cutting thickness Fibrocement	Cutting thickness Cellular concrete	EAN
UL90131	230 x 19 mm	3	6- 150 mm	6- 150 mm	10- 175 mm	10- 175 mm	3321670093398



Specialist



### HOLE SAWS

- colour white
- material bimetal
- for sawing wood, chipboards, plastic and metal

Order no.	Diameter	Packing size	EAN
XRS0014	14 mm	1/100	6418914511606
XRS0016	16 mm	1/100	6418914511613
XRS0017	17 mm	1/100	6418914511620
XRS0019	19 mm	1/100	6418914511637
XRS0020	20 mm	1/40	6418914511644
XRS0021	21 mm	1/40	6418914511651
XRS0022	22 mm	1/40	6418914511668
XRS0024	24 mm	1/40	6418914511675
XRS0027	27 mm	1/40	6418914511682
XRS0029	29 mm	1/40	6418914511699
XRS0030	30 mm	1/40	6418914511705
XRS0032	32 mm	1/40	6418914511712
XRS0033	33 mm	1/4/40	6418914694279
XRS0035	35 mm	1/4/40	6418914694286
XRS0037	37 mm	1/4/40	6418914694293
XRS0038	38 mm	1/4/40	6418914694309
XRS0040	40 mm	1/4/40	6418914694316
XRS0041	41 mm	1/4/40	6418914694323
XRS0043	43 mm	1/4/40	6418914694330
XRS0044	44 mm	1/4/40	6418914694347
XRS0045	45 mm	1/4/40	6418914694354
XRS0048	48 mm	1/4/40	6418914694361
XRS0051	51 mm	1/4/40	6418914694378
XRS0052	52 mm	1/4/40	6418914694385
XRS0054	54 mm	1/4/40	6418914694392
XRS0057	57 mm	1/4/40	6418914694408
XRS0059	59 mm	1/4/40	6418914694415
XRS0060	60 mm	1/4/40	6418914694422
XRS0064	64 mm	1/4/40	6418914694439
XRS0065	65 mm	1/5/50	6418914694446
XRS0067	67 mm	1/5/50	6418914694453
XRS0068	68 mm	1/5/50	6418914694460
XRS0070	70 mm	1/5/50	6418914694477
XRS0073	73 mm	1/5/50	6418914694484
XRS0076	76 mm	1/5/50	6418914694491
XRS0079	79 mm	1/5/50	6418914694507
XRS0083	83 mm	1/5/50	6418914694514
XRS0086	86 mm	1/5/50	6418914694521
XRS0089	89 mm	1/5/50	6418914694538
XRS0092	92 mm	1/5/30	6418914694545
XRS0095	95 mm	1/5/30	6418914694552
XRS0098	98 mm	1/5/30	6418914694569
XRS0102	102 mm	1/5/30	6418914694576
XRS0105	105 mm	1/5/30	6418914694583
XRS0108	108 mm	1/5/30	6418914694590
XRS0111	111 mm	1/5/30	6418914694606
XRS0114	114 mm	1/5/30	6418914694613
XRS0121	121 mm	1/5/30	6418914694620
XRS0127	127 mm	1/5/30	6418914694637
XRS0133	133 mm	1/5/30	6418914694644
XRS0140	140 mm	1/5/30	6418914694651
XRS0146	146 mm	1/5/30	6418914694668
XRS0152	152 mm	1/5/20	6418914694675



Specialist

### HOLE SAW ADAPTER

**XRS0001**

- drill Ø 6 mm
- shank 3/8" with hex head
- chuck 3/8"
- thread 5/8"-18" UNF
- for 33-152 mm hole saws
- packing size: 1/5/50
- EAN 6418914694682



Specialist

### HOLE SAW ADAPTER

**XRS0001A**

- drill Ø 6 mm
- shank 3/8" with hex head
- chuck 3/8" - 1/2"
- thread 1/2"-20 UNF
- for 14-30 mm hole saws
- pakkauskoko: 1
- EAN 6418914511729



Specialist

### HOLE SAW KIT

**XRS0003**

- includes adapter and holes Ø 51 mm, 76 mm and 95 mm
- for wood, chipboard, plastic and metal
- packing size: 1/10
- EAN 6418914510463



Specialist

### HOLE SAW KIT

**XRS0002**

- blades Ø 38, 51, 67, 75, 95 mm
- for ceramic tiles, light concrete, tiles
- packing size: 1
- EAN 6418914699304



### HOLE SAW KIT

**X008211**

- blades 5 pcs: Ø 60, 67, 74, 81, 95 mm
- sawing depth 30 mm
- centre drill Ø 10 mm
- blades with quick locking
- Self-service package
- packing size: 1/6/24
- EAN 6418914149878



## HOLE SAW

TPG21700

- 30-80 mm
- max. speed 450 rpm
- hard metal bits
- for wood and stone plates
- single packed
- packing size: 1
- EAN 8011017217000



## HOLE DRILL 2-LEGS

- max. speed 250 rpm
- packing size: 1/5



TPG21600

- centre drill HSS Ø 4 mm
- hole Ø 27-104 mm
- EAN 8011017216003

TPG21400

- centre drill HSS Ø 6 mm
- hole Ø 20-123 mm
- EAN 8011017214009

TPG21500

- centre drill HSS Ø 10 mm
- hole Ø 25-217 mm
- EAN 8011017215006



## MAGNETIC JIG SET FOR ELECTRIC BOXES

RPS9000

- practical in installing wall boards and panels towards electric boxes
- includes 4 magnets
- instruction:
  1. Electric box is installed
  2. Press the magnet in to the box
  3. Focus the board
  4. Locate the electric box with the magnet
  5. Drill the hole with hole saw, remove the magnet for the next use
- packing size: 1
- EAN 6418914514355

## HOLE DRILL 2-LEGS

XK4008

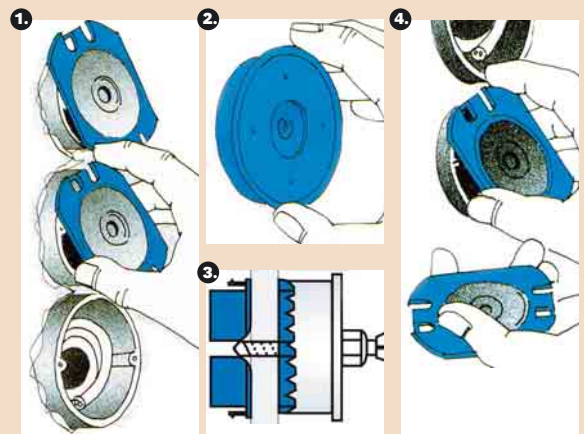
- blades M-2 tool steel
- drilling capacity 30-120 mm
- centre drill Ø 8 mm
- includes centering bit
- shank 10 mm
- blister-package
- packing size: 1/10/60
- EAN 6418914615847



## MAGNETIC DRILL JIG SET FOR ELECTRIC BOXES

RPS9775

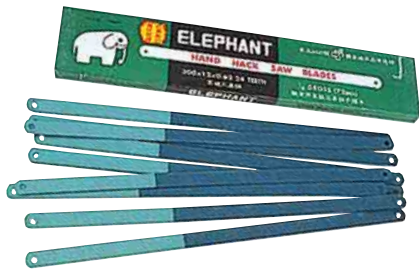
- with the help of magnetic casings, the positioning of hole is easy, fast and accurate
- suitable for all sheet materials
- the kit includes:
  - 2 pcs of centre drills
  - hole saws H97 (for roof) and H75 (for wall) and spare blades
  - the blade part of saws made of steel and shaft made of aluminium
  - 8 pcs of magnets:
    - 2 magnet finders, 4 magnets for wall boxes and 2 for roof boxes
- packed in plastic case
- packing size: 1/7
- EAN 6430010983422



1. Push the magnet casing to the electric box and assemble the plate. (The assembled electric boxes can be fastened or loose, also wired.)
2. Place the right place with the magnet finder.
3. Drill the hole H 97 to the roof and H 75 to the wall. Assemble the centre drill 5 mm over the thickness of plate, that way you'll get perfect result.
4. Remove the magnet casings for next use.

### HACK SAW BLADES

- length 305 mm
- 24 teeth / inch



#### X016012

- carbon steel
- packing size: /10/100
- EAN 6418914150997

#### X016012A

- special steel
- packing size: 1/10/100
- EAN 6418914151000



### BOW SAW BLADES

Order no.	Size	Packing size	EAN
AM053	300 mm/12"	1/10	5715110431105
AM055	533 mm/21"	1/10	5715110420185
AM054	610 mm/24"	1/10	5715110430191
AM051	762 mm/30"	1/10	5715110430238
AM052	914 mm/36"	1/10	5715110430290



### BLADES FOR TURNING SAWS

- suits for XSS160V

#### XSS160V-1

- length 127 mm
- serration Z15
- packing size: 1
- EAN 6418914612471

#### XSS160V-2

- length 127 mm
- serration Z18
- packing size: 1
- EAN 6418914612488

#### XSS160V-3

- length 127 mm
- serration Z25
- packing size: 1
- EAN 6418914612495

### HACKSAW BLADES



- Black&Decker, Skil, Stayer, AWD60 etc...
- 3 pcs / package
- fastening width 6,2 mm
- packing size: 1/10

Order no.	For	Length mm	EAN
TPG68500	metal	70	8011017685007
TPG68650	metal/70 mm	70	8011017686509
TPG68700	wood/rough	90	8011017686509
TPG68900	wood/fine	80	8011017689005
TPG68950	wood/100 mm/norm.	120	8011017689500



- Metabo (MT06100, MT10900), Kress (KR500EST, KR650SPS), Bosch, Robust (ROB7, ROB7A), Casals (CVC50, CVC65PE, CVC5002)
- fastening width 6,2 mm
- 3 pcs/package
- packing size: 1/10

Order no.	For	Length mm	EAN
TPG69500	metal	75	8011017695006
TPG69650	metal/100 mm	120	8011017696508
TPG69700	wood/rough	90	8011017686509
TPG69900	wood/fine	75	8011017699004
TPG69950	wood/100 mm/norm.	125	8011017699509



### BLADES FOR ELECTRIC PLANES

- 2 blades/package
- packing size: 1/5

Order no.	Size mm	Suitable for e.g.	EAN
TPG62985	75,5x5,5x1,1	AEG, B&D, Bosch, Kress, Metabo, Skil	8011017629858
TPG62987	80,5x5,9x1,1	Elu, B&D	8011017629872
TPG62989	82,0x5,5x1,1	AEG, B&D, Bosch, Fein, Hitachi, Makita, Metabo, Skil	8011017629896
TPG62995	82,0x5,5x1,1 (nurkka-pyörästys)	AEG; B&D, Bosch, Fein, Hitachi, Makita	8011017629957
TPG62991	82,7x5,5x1,1	B&D	8011017629919
TPG62993	102,0x5,5x1,1	AEG	8011017629933



- Bosch, Stayer etc.
- 3 pcs / package
- fastening width 4 mm
- packing size: 1/10

Order no.	For	Length mm	EAN
TPG70500	metal	75	8011017705002
TPG70700	wood/rough	90	8011017707006



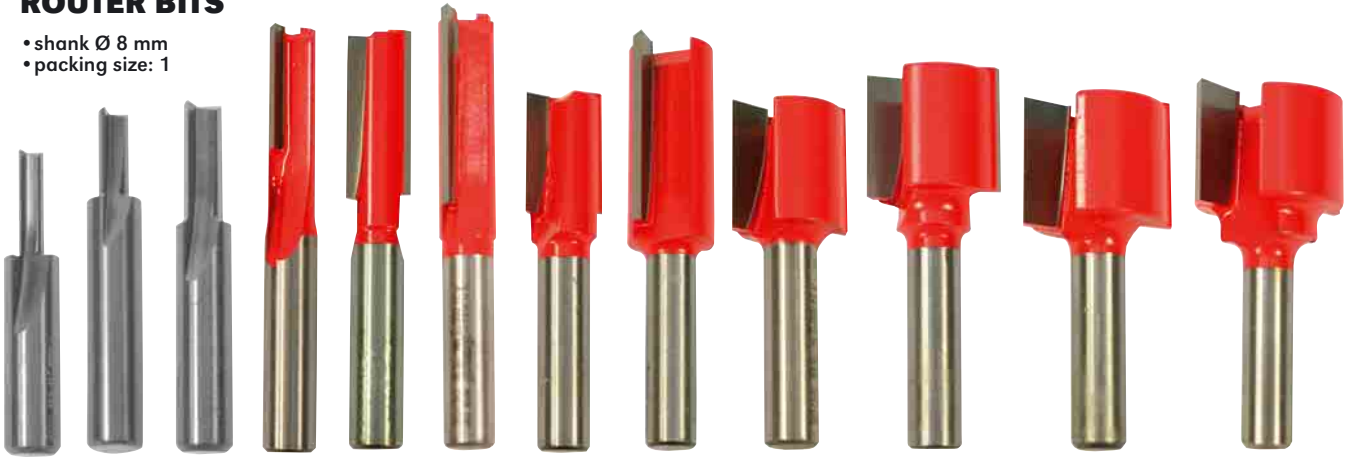
- Black&Decker, Makita, Chervon
- 3 pcs / package
- fastening width 8 mm
- packing size: 1/10

Order no.	For	Length mm	EAN
TPG71400	metal/rough	90	8011017714004
TPG71500	metal/norm.	75	8011017715001
TPG71600	metal/fine	75	8011017716008
TPG71700	wood/rough	90	8011017717005
TPG71800	wood/norm.	80	8011017718002
TPG71900	wood/fine	80	8011017719009



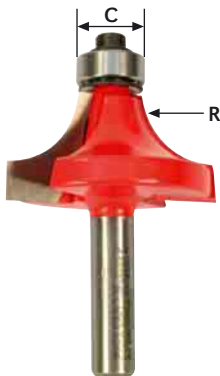
**ROUTER BITS**

- shank Ø 8 mm
- packing size: 1



**Straight**

Order no.	Ø	Carbide height	Overall height	EAN	Order no.	Ø	Carbide height	Overall height	EAN
CFT10108	4,0 mm	15,8 mm	44,5 mm	8025331477804	CFT13508	12,0 mm	19,0 mm	56,0 mm	8025331477903
CFT11308	5,0 mm	12,7 mm	50,8 mm	8025331477842	CFT15008	16,0 mm	31,8 mm	66,0 mm	8025331487520
CFT11408	6,0 mm	16,0 mm	50,8 mm	8025331477866	CFT15108	18,0 mm	20,0 mm	52,0 mm	8025331487537
CFT11508	8,0 mm	19,0 mm	64,0 mm	8025331477880	CFT15508	20,0 mm	19,0 mm	56,0 mm	8025331477965
CFT01008	10,0 mm	25,4 mm	62,4 mm	8025331475855	CFT15708	22,0 mm	19,0 mm	51,0 mm	8025331487544
CFT11008	10,0 mm	31,8 mm	69,0 mm	8025331488541	CFT15908	25,0 mm	19,0 mm	56,0 mm	8025331487568



**Rounding bits**

Order no.	Ø	Carbide height	Overall height	C	R	EAN
CFT3411408	31,8 mm	17,5 mm	58,0 mm	12,7 mm	9,5 mm	8025331478306
CFT3411608	38,1 mm	19,05 mm	60,7 mm	12,7 mm	12,7 mm	8025331478320



**CUTTER BIT SET 6-PCS.**

**XKJ0006**

- shank Ø 6 mm
- includes:
  - ogee fillet cutter Ø 22 mm, R=6,35
  - round over cutter Ø 22 mm, R=6,3
  - bearing edge cutter Ø 12,7 mm
  - straight plunge cutters Ø 6 and 12 mm
  - dovetail cutter Ø 12,7 mm, angle 14°
- wooden box
- packing size: 1/20
- EAN 6418914630888

# CIRCULAR SAW BLADES



- the bodies of Freud-circular saw blades are laser cut from hard, high quality steel
- the Teflon coating offers many advantages: rust and resin do not stick to the Teflon coating on the blade, many hours of use with less maintenance needed, easy to clean, requires less horse power, 50% lower temperature compared to conventional saw blades
- Freud blades are balanced one by one with automatic, precision devices that completely eliminate harmful vibrations

- micrograin carbide with added titanium, improves the life of the tips, reduces abrasion of the cutting edge and therefore improves the quality of the cut and the life of the blade
- the particular shape of the tips assures two important and exclusive advantages: The tips thickness is 30% greater than standard tips and this allows a higher number of sharpenings. The lateral cutting edge is smaller therefore the tips have a lower propensity to follow the woods grain and therefore the cut is more precise.



**Yellow - LP20M**

These blades are designed with low number of teeth and are particularly fit for long grain cutting solid wood. These blades give a good finish if used in this way. If these are the blades you need, choose the yellow line. (CFT20 -initials)

**Red - LP30M**

These blades are designed with an average number of teeth and are particularly fit for both long grain and cross grain cutting solid wood. These blades give a good finish if used in this way. If these are the blades you need, choose the red line. (CFT30 -initials)

**Blue - LP40M**

These blades are designed with a high number of teeth and are particularly fit for cross grain cutting solid wood. These blades give a good finish if used in this way. If these are the blades you need, choose the blue line. (CFT40 -initials)

PACKING SIZE: 1/25  
Blades single packed in Blister

Order no.	Size	EAN	Order no.	Size	EAN
CFT30001	125 x 2,4 x 20 Z24	8025331201874	CFT20015	190 x 2,4 x 30 Z12	8025331201638
CFT30002	130 x 2,4 x 20 Z24	8025331201898	CFT30015	190 x 2,4 x 30 Z24	8025331202154
CFT30003	140 x 2,4 x 20 Z24	8025331201911	CFT40015	190 x 2,4 x 30 Z40	8025331202604
CFT20004	150 x 2,4 x 16 Z12	8025331201416	CFT20016	200 x 2,4 x 30 Z16	8025331201652
CFT30004	150 x 2,4 x 16 Z24	8025331201935	CFT30016	200 x 2,4 x 30 Z30	8025331202178
CFT20005	150 x 2,4 x 20 Z12	8025331201430	CFT40016	200 x 2,4 x 30 Z40	8025331202628
CFT30005	150 x 2,4 x 20 Z24	8025331201959	CFT20017	210 x 2,4 x 25 Z16	8025331201676
CFT20006	160 x 2,4 x 16 Z12	8025331201454	CFT30017	210 x 2,4 x 25 Z30	8025331202192
CFT30006	160 x 2,4 x 16 Z24	8025331201973	CFT40017	210 x 2,4 x 25 Z40	8025331202642
CFT40006	160 x 2,4 x 16 Z40	8025331202420	CFT20018	210 x 2,4 x 30 Z16	8025331201690
CFT20007	160 x 2,4 x 20 Z12	8025331201478	CFT30018	210 x 2,4 x 30 Z30	8025331202215
CFT30007	160 x 2,4 x 20 Z24	8025331201997	CFT40018	210 x 2,4 x 30 Z40	8025331202666
CFT40007	160 x 2,4 x 20 Z40	8025331202444	CFT20019	216 x 2,4 x 30 Z24	8025331201713
CFT20008	160 x 2,4 x 30 Z12	8025331201492	CFT30019	216 x 2,4 x 30 Z48	8025331202239
CFT30008	160 x 2,4 x 30 Z24	8025331202017	CFT40019	216 x 2,4 x 30 Z64	8025331202680
CFT40008	160 x 2,4 x 30 Z40	8025331202468	CFT20020	220 x 2,4 x 30 Z16	8025331201737
CFT20009	170 x 2,4 x 30 Z12	8025331201515	CFT30020	220 x 2,4 x 30 Z30	8025331202253
CFT30009	170 x 2,4 x 30 Z24	8025331202031	CFT40020	220 x 2,4 x 30 Z40	8025331202703
CFT40009	170 x 2,4 x 30 Z40	8025331202482	CFT20021	230 x 2,8 x 30 Z20	8025331201751
CFT20010	180 x 2,4 x 20 Z12	8025331201539	CFT30021	230 x 2,8 x 30 Z34	8025331202277
CFT30010	180 x 2,4 x 20 Z24	8025331202055	CFT40021	230 x 2,8 x 30 Z48	8025331202727
CFT40010	180 x 2,4 x 20 Z40	8025331202505	CFT20022	235 x 2,8 x 25 Z24	8025331201775
CFT20011	180 x 2,4 x 30 Z12	8025331201553	CFT30022	235 x 2,8 x 25 Z34	8025331202291
CFT30011	180 x 2,4 x 30 Z24	8025331202079	CFT40022	235 x 2,8 x 25 Z48	8025331202741
CFT40011	180 x 2,4 x 30 Z40	8025331202529	CFT20023	235 x 2,8 x 30 Z24	8025331201799
CFT20012	184 x 2,4 x 16 Z12	8025331201577	CFT30023	235 x 2,8 x 30 Z34	8025331202314
CFT30012	184 x 2,4 x 16 Z24	8025331202093	CFT40023	235 x 2,8 x 30 Z48	8025331202765
CFT40012	184 x 2,4 x 16 Z40	8025331202543	CFT20024	240 x 2,8 x 30 Z24	8025331201812
CFT20013	190 x 2,4 x 16 Z12	8025331201591	CFT30024	240 x 2,8 x 30 Z36	8025331202338
CFT30013	190 x 2,4 x 16 Z24	8025331202116	CFT40024	240 x 2,8 x 30 Z48	8025331202789
CFT40013	190 x 2,4 x 16 Z40	8025331202567	CFT20025	250 x 2,8 x 30 Z24	8025331201836
CFT20014	190 x 2,4 x 20 Z12	8025331201614	CFT30025	250 x 2,8 x 30 Z40	8025331202352
CFT30014	190 x 2,4 x 20 Z24	8025331202130	CFT40025	250 x 2,8 x 30 Z60	8025331202802
CFT40014	190 x 2,4 x 20 Z40	8025331202581			

## IRWIN

### BUSHES

<b>30/16 mm</b>	<b>30/20 mm</b>	<b>30/25 mm</b>
<b>AM202</b>	<b>AM203</b>	<b>AM204</b>

# CIRCULAR SAW BLADES

# freud<sup>®</sup> pro



## CIRCULAR SAW BLADES

Order no.	Size	Coating	EAN
CFT46DA3	250 x 3,2 x 30 Z24	teflon	8025331138217
CFT06DC3	250 x 3,2 x 30 Z60	normal	8025331209672
CFT70003	315 x 3,2 x 30 Z24	teflon	8025331490858
CFT70006	315 x 3,2 / 2,2 x 25 Z48		
CFT70007	315 x 3,2 / 2,2 x 30 Z72		



## FREUD DISPLAYS

Blades on page 21/10

### CFT10000

• incl. display and 67 blades  
EAN 6418914622906

casals

## CIRCULAR SAW BLADE

Order no.	Size	EAN
CV934650100	215 x 15,9 Z48	6418914407022

# IRWIN



## CIRCULAR SAW BLADES

• for sawing aluminium  
• packing size: /5

# IRWIN

## CIRCULAR SAW BLADES for steel

- for all types of soft steel, not suitable for stainless steel
- polished and lacquered carbide tips (C6)
- packing size: 1



Order no.	Size	EAN
AM211	305 x 80 x 25,4 mm	5706915015997
AM210	355 x 80 x 25,4 mm	5406915016000

Order no.	Size	Fitting plate	EAN
AM114	160 x 20 Z56	16 mm	5706915015805
AM115	184 x 30 Z48	16, 20 and 25 mm	5706915015812
AM116	200 x 30 Z60	-	5706915015829
AM117	210 x 30 Z48	-	5706915015836
AM118	210 x 30 Z60	-	5706915015843
AM119	216 x 30 Z48	-	5706915015850
AM120	216 x 30 Z60	-	5706915015867
AM121	250 x 30 Z60	16 and 20 mm	5706915015874
AM122	250 x 30 Z80	16 and 20 mm	5706915015881
AM123	250 x 30 Z100	-	5706915015898
AM124	254 x 35 Z100	30 and 32 mm	5706915015904
AM125	300 x 30 Z80	-	5706915015911
AM126	300 x 30 Z96	20 and 28,6 mm	5706915015928
AM127	350 x 30 Z84	-	5706915015935

