



www.ikh.fi

MASONRY AND PAINTING TOOLS



24





www.ikh.fi

24. MASONRY AND PAINTING TOOLS

Brushes	12,13
Cement trowels	3
Concrete grinders	4
Concrete mixers	2
Darby floats	3
Extensions	10
Finishing trowels	3
Glass / tile cutting pliers	5
Grinding support	9
Grout seam rasp	5
Jointer tool	6
Knee pads	4
Paint rollers	11
Pasting brush	10
Scrapers	9

Sealing rubber	6
Sealing trip	5
Silicon spatle	6
Spattles	7,8
Speed mixers	4
Sponges	6
Tapes	14
Tile cutters	5
Tiling pliers	5
Wallpaper brushes, spatles and rollers	10
Wallpaper cutting edges	9
Wallpaper knife	9
Wallpaper remover	9
Warning tape	2
Wire twisting crooks	2





**CONCRETE MIXER
132 litre**



BET132

FAST ASSEMBLING:
ONLY 20 MINUTES!

- drum capacity approx. 132 l
- V-shaped mixing blades for highest mixing quality
- crown wheel segments out of resistant modern material for long life use
- Guarantee 3 years. Low noise.
- protected pinion
- German motor 600 W / 230 V with integrated temperature control provides security and longevity to the motor

- motor canopy made of polyamide: maximum security, reinforced watertightness
- patented large diameter handwheel for easy handling
- weight 50 kg
- packing size: /4
EAN 3700018120215

**CONCRETE MIXER
180 litre**



BET180

- drum capacity approx. 174 l
- mixing capacity 140 l
- V-shaped mixing blades for highest mixing quality
- crown wheel segments out of resistant modern material for long life use
- Guarantee 3 years. Low noise.
- protected pinion
- German industrial motor 850 W / 230 V with integrated temperature control provides security and longevity to the motor
- protection class IP45

- motor canopy made of polyamide: maximum security, reinforced watertightness
- patented large diameter handwheel for easy handling
- dimensions: 1,3 x 0,7 x 1,5 m
- weight 80 kg
- wheel Ø 250 mm
- packing size: /2
EAN 3700018101146



**TWISTING CROOK
X001012**

- packing size: /24/96
EAN 6418914621008



**Automatic WIRE TWISTING CROOK
JW93900002**

- twists the wire when pulling
- length 310 mm
- comfortable handle
- hanging crook
- packing size: 1/50
EAN 7317349390024



**WIRE TWISTING CROOK
automatic
MR075**

- twists the wire when pulling
- comfortable handle
- length 320 mm
- packing size: 1
EAN 4084900550892



**WIRE TWISTING ROD
MR158**

- 100 x 1,1 mm
- copper-plated
- 1000 pcs/bundle
- packing size: 1
EAN 4007535469087



MR036

WARNING TAPE

- thickness 50 µm



MR037



Order no.	Dimensions	Pack.size	EAN
MR036	100 x 80 mm	1/24	4007535466048
MR037	500 x 80 mm	1/12	4007535466055



DARBY FLOATS, aluminium with spirit level

DARBY FLOAT aluminium

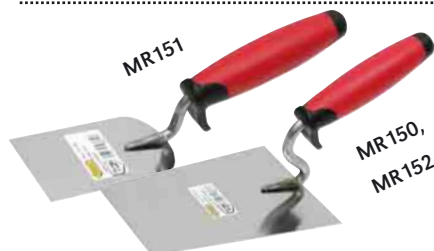
- frame 100 x 18 mm
- packing size: 1/3

Order no.	Length cm	EAN
MR068	150	4007535413813
MR069	200	4007535413837
MR070	300	4007535413905

Order no.	Length cm	EAN
MR071	200	4007535413929
MR072	300	4007535424826



Order no.	Length mm	EAN
MR167	150 mm	4007535482697
MR168	180 mm	4007535482703
MR169	200 mm	4007535482710



CEMENT TROWEL stainless

- stainless blade
- soft-handle
- packing size: 1



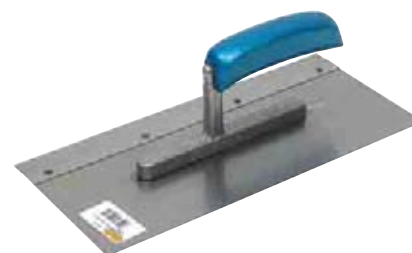
Order no.	Length mm	EAN
MR151	60 mm	4007535466628
MR152	160 mm	4007535466697
MR150	180 mm	4007535466666



NOTCHED TROWEL with Soft-handle, stainless

- made of stainless steel
- size 280 x 130 x 0,7 mm
- packing size: 1/30

Order no.	Toothing	EAN
MR054	4 x 4	4007535470038
MR055	6 x 6	4007535470045
MR056	8 x 8	4007535470014
MR057	10 x 10	4007535422105



FLOORING TROWEL

MR041

- for exchangeable 28 cm notched blade
- packing size: 1/10



EAN 4007535411345



CEMENT TROWEL with Soft-handle, stainless

MR053

- made of stainless steel
- size 280 x 130 x 0,7 mm
- packing size: 1/30

EAN 4007535470021

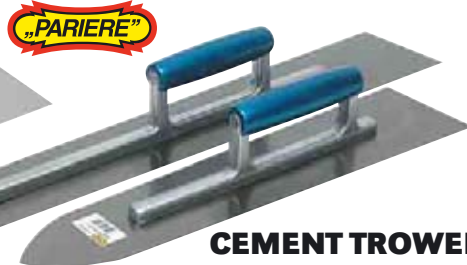


CEMENT TROWEL, stainless

MR058

- made of stainless steel
- size 130 x 480 x 0,7 mm
- packing size: 1/10

EAN 4007535236504



CEMENT TROWEL

- tapering model
- packing size: 1/50

Order no.	Length mm	EAN
MR059	450 mm	4007535236603
MR060	500 mm	4007535413271
MR061	600 mm	4007535236702
MR062	700 mm	4007535366409



FINISHING TROWELS

- width 480 mm
- packing size: 1

Order no.	Toothing mm	EAN
MR170	4 x 4	4007535471059
MR171	6 x 6	4007535413257
MR173 ruostumaton	6 x 6	4007535413264
MR172	8 x 8	4007535467526



NOTCHED BLADE

- notching on both sides
- suitable for the flooring trowel MR041
- packing size: 1



Order no.	Width of tooth	Width of gap	Depth	EAN
MR041A	4 mm	4 mm	4 mm	4007535222200
MR041B	6 mm	6 mm	6 mm	4007535222309
MR041C	8 mm	8 mm	8 mm	4007535222507



CONCRETE GRINDERS, urethane

14 x 28 cm

CO114280

- size 14 x 28 cm
- thickness 17 mm
- packing size: /40
- EAN 4010485114280

20 x 36 cm

CO120360

- size 20 x 36 cm
- thickness 17 mm
- packing size: 20
- EAN 4010485120366

22 x 42 cm

CO122420

- size 22 x 42 cm
- thickness 17 mm
- packing size: /15
- EAN 4010485122421

24 x 48 cm

CO124480

- size 24 x 48 cm
- thickness 18 mm
- packing size: /15
- EAN 4010485124487



FLOAT LEVEL

- wooden
- packing size: 1



FELT FLOAT, hard

MR063

- hard felt
- size 280 x 140 x 10 mm
- packing size: 1/25
- EAN 4007535413196

FELT FLOAT, soft

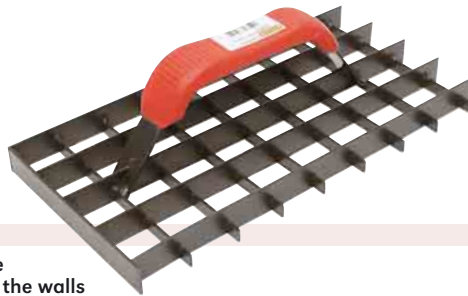
MR064

- soft felt
- size 280 x 140 x 10 mm
- packing size: 1/25
- EAN 4007535333005

SANDING GRILL

MR156

- for removing the roughness from the walls after rendering, troweling etc.
- size 28 x 150 mm
- packing size: 1
- EAN 4007535152002



KNEE PADS cellular plastic

X016041

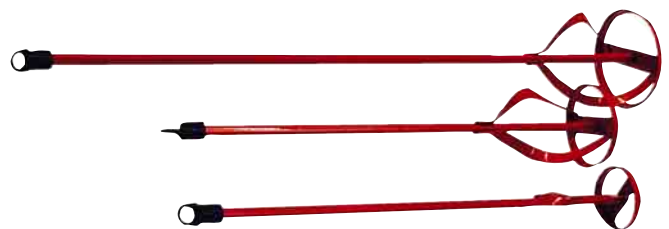
- pair
- for tiling etc. floor work
- adjustable tightening band
- packing size: /12/48
- EAN 6418914620315



SPEED MIXER

- packing size: 1

Order no.	Shank Ø	Size	EAN
TPG50800	8 mm	100 x 500 mm	8011017508009
TPG50900	10 mm	120 x 600 mm	8011017509006



SPEED MIXERS

- packing size: 1/48

Order no.	Wings	Shaft	Length	EAN
XTBA60003	60 mm	8 mm	400 mm	6418914622692
XTBA60002	80 mm	8 mm	400 mm	6418914622685
XTBA60001	100 mm	10 mm	600 mm	6418914622678





GROUT SEAM RASP

IKH7116

- for removing the old grout
- two blades:
 - rough tungsten carbide -cutting blade removes the grout
 - serrated steel blade removes the looser grout
- non-sliding, angular handle makes working easier
- packing size: 1/20/60



EAN 6418914709706



GLASS / TILE CUTTING PLIERS WITH CUTTER

XTB3228

- blade made of wolfram
- packing size: 1/12/72

EAN 6418914607422



TILE CUTTER 330 mm TABLE MODEL

XCM330

- with cutting roll
- with cutting button
- adjustable scale
- max. cutting length 330 mm
- max. cutting thickness 12 mm
- packing size: 1/4

EAN 6418914606999



SPARE BLADE

XCM330-1

EAN 6418914607002



TILE CUTTER 400mm TABLE MODEL

XCM330BA

- jewelled
- with cutting roll
- with cutting button
- adjustable scale
- packing size: 1/4

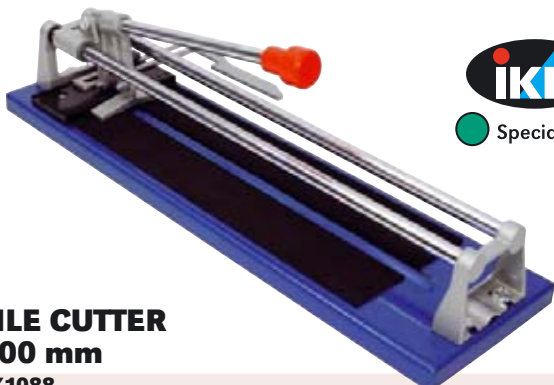
EAN 6418914607019



SPARE BLADE

XCM330-1

EAN 6418914607002



TILE CUTTER 400 mm

TK1088

- Enamel finished steel base and steel handle
- Tungsten carbide steel blade
- packing size: 1/6

EAN 6418914547421



TILE NIBBLING Pincer 200 mm

MR030

- for wall tiles
- black lacquered handles
- polished jaws
- with spring, self-opening
- packing size: 1/50

EAN 4007535341802



SEALING STRIPS 20 m

Order no.	Ø	Packing size	EAN
MR027	2 mm	1	4007535469585
MR028	3 mm	1	4007535469865
MR029	4 mm	1	4007535469872



TILE NIBBLING Pincer 200 mm

KN9100200

- polished head
- black atramentized handles
- predrilled holes in tiles can be enlarged by nibbling
- material: special tool steel, oil-hardened
- weight 145 g
- packing size: 1/6

EAN 4003773012122





JOINTER TOOL

- rounded neck
- packing size: 1/6

Order no.	Width	EAN
MR047	10 mm	4007535467601
MR048	12 mm	4007535467618
MR049	14 mm	4007535467397



JOINTER TOOL

- flat neck
- packing size: 1/6

Order no.	Width	EAN
MR050	10 mm	4007585468412
MR051	12 mm	4007535482086
MR052	14 mm	4007535468424



SILICON SPATTLE 110 mm

MR127

- circle-shaped
- good for seaming
- width 110 mm
- packing size: 1
- EAN 4007535313106



SEALING RUBBER

MR026

- paddle part made of rubber
- size 140 x 280 mm
- packing size: 1/26
- EAN 4007535366508



SPONGE

MR025

- very absorbent
- 30 mm thick Hydro-sponge
- size 140 x 280 mm
- packing size: 1/20
- EAN 4007535413202



SPONGE Hydro

MR139

- size 170 x 115 x 60
- for tiling, car-washing, household work etc.
- packing size: 1
- EAN 4007535340904



JOINTING TROVEL 14 x 28 cm

CO344280

- size 14 x 28 cm
- base made of cellular plastic, thickness 9 mm
- packing size: /15
- EAN 4010485344281



CLEANING PAD 15 x 29 cm

CO384290

- size 15 x 29 cm
- base made of foam plastic, thickness 40 mm
- packing size: /10
- EAN 4010485384294



FOAM RUBBER PADDLE

MR138

- size 280 x 140 x 20 mm
- orange foam rubber
- packing size: 1
- EAN 4007535366607



PAINTER'S SCRAPER

- lacquered wood handle
- flexible steel
- packing size: 1/12



Order no.	Width	EAN
MR001	20 mm	4007535110200
MR002	30 mm	4007535110309
MR003	40 mm	4007535110408
MR004	50 mm	4007535110507
MR005	60 mm	4007535110606
MR006	70 mm	4007535110705
MR007	80 mm	4007535110804
MR008	90 mm	4007535110903
MR009	100 mm	4007535111009
MR010	120 mm	4007535111207



PAINTER'S SCRAPER stainless

- stainless steel
- black plastic handle
- flexible steel
- packing size: 1/12



Order no.	Width	EAN
MR012	40 mm	4007535122302
MR013	60 mm	4007535122500
MR014	80 mm	4007535122609
MR015	100 mm	4007535122708
MR016	120 mm	4007535122807



SCRAPING KNIFE

MR011

- very strong blade and handle
- for cleaning
- width 80 mm
- packing size: 1/100



PUTTY SPATTLE stainless

MR018

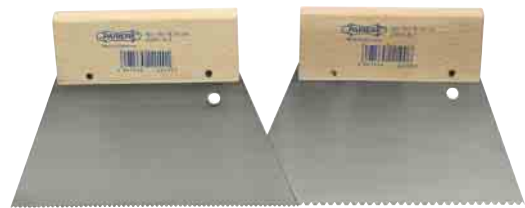
- phillips screw in handle, for gypsum board screws
- width 150 mm
- packing size: 1



FLEX SPATTLE stainless

- stainless steel
- adjustable rigidity
- packing size: 1/6

Order no.	Width	EAN
MR078	155 mm	4007535411482
MR079	200 mm	4007535411499
MR080	270 mm	4007535411505
MR081	300 mm	4007535481959
MR082	350 mm	4007535466130



TEETH SPATTLE 180 mm

- handle part made of wood
- height 150 mm
- packing size: 1

Order no.	Teeth width	Width of teeth gap	Depth of teeth gap	EAN
MR131	1,2 mm	1,8 mm	1,5 mm	4007535221401
MR132	2,1 mm	2,9 mm	2,6 mm	4007535221906
MR133	6,0 mm	6,0 mm	6,0 mm	6418914714564



SPATTLE stainless

- made of stainless steel
- ergonomic plastic handle
- packing size: 1/10



Order no.	Width	EAN
MR083	150 mm	4007535466154
MR084	200 mm	4007535466161
MR085	250 mm	4007535466178
MR086	300 mm	4007535481256
MR111	450 mm	4007535481263



PLYWOOD SPATTLE stainless

- made of stainless steel
- 2 holes for extension bar holders
- packing size: 1/6



Order no.	Width	EAN	Order no.	Width	EAN
MR087	100 mm	4007535467830	MR091	300 mm	4007535141204
MR088	150 mm	4007535467847	MR092	400 mm	4007535141303
MR089	200 mm	4007535141105	MR093	500 mm	4007535141402
MR090	250 mm	4007535467854	MR094	600 mm	4007535180203



**JAPAN SPATTLE SET
4-pcs**

MR019

- plastic support
- high blade
- widths: 5, 8, 10 and 12 cm
- packing size: 1/60
- EAN 4007535410997



**JAPAN SPATTLE SET
4-pcs stainless**

MR020

- made of stainless steel
- plastic support
- high 11 cm blade
- widths: 5, 8, 10 and 12 cm
- packing size: 1/50
- EAN 4007535410911



PUTTY DISH

MR121

- soft plastic
- easy to clean
- Ø 115 mm, height 110 mm
- packing size: 1
- EAN 4007535466338



RUBBER SPATTLE 200 mm

MR137

- thickness of rubber 5 mm, width 200 mm
- packing size: 1
- EAN 4007535340607



**CAR SCRAPING
KNIFE SET**

MR024

- very flexible
- suits well for rounded shapes
- widths: 6,5 cm, 10 cm and 12 cm
- packing size: 1/100
- EAN 4007535137108



GLUE SPATTLE

- plastic
- packing size: 1/12

MR042

- 135 x 90 mm
- EAN 4007535249702

MR043

- 180 x 155 mm
- EAN 4007535249603



Made in Sweden



**SPREADING
SPATTLES**

- wooden shaft
- steel blade
- packing size: /10

Order no.	Width	Packing size	EAN
HAB01	100 mm	/10	7391867503005
HAB02	200 mm	/10	7391867500325
HAB49	300 mm	/10	7391867500349
HAB50	400 mm	/10	7391867500387
HAB52	600 mm	/5	7391867500370



Made in Sweden



GLUE SPATTLES

- serrated
- plastic
- packing size: /10

100 mm

HAB43

- EAN 7319469301003

230 mm

HAB47

- EAN 7319469302307



Made in Sweden

**RUBBER SPATTLE
100 x 80 cm**

HAB06

- thickness 5 mm
- packing size: /10
- EAN 7391867050158



GRINDING SUPPORT with joint

HAB03

- abrasive base 230 x 80 mm
- felt base
- extension bar can be fitted to hand grip
- the joint is flexible to any direction
- packing size: /5

EAN 7318910500804



PAINT SCRAPER

HAB07

- length 220 mm
- width of blade 43 mm
- reversible blade: 4 blade surfaces usable
- packing size: /10

EAN 7318721573547



WINDOW SCRAPER "CLICK"

HAB35

- metal body
- packing size: 1/24

EAN 4710377253713



SPARE BLADES 10 pcs

HAB36

- packing size: 1/12

EAN 4710377253966



HARD METAL SCRAPER

MR031

- 64 mm
- packing size: 1/100

EAN 4007535471264

SPARE BLADES 3 pcs

MR031A



WALLPAPER SCISSORS stainless

MR115

- blades made of stainless steel
- plastic handles
- packing size: 1
- 10"

EAN 4007535189008



WINDOW SCRAPER

MR032

- razor blade for cleaning windows, tiles, etc. from paint
- blade can be turned on side
- width 45 mm
- packing size: 1/6

EAN 4007535206002



SPARE BLADES 10 pcs

MR033

- thickness 0,2 mm
- packing size: 1/10

EAN 4007535206118



WALLPAPER REMOVER

MR113

- punches the old wallpaper when water / wallpaper removing agent gets between the wallpaper and wall
- plastic body
- packing size: 1

EAN 4007535183204



WALLPAPER KNIFE, stainless

MR099

- stainless steel
- cuts with both sides
- wooden handle
- length 30 cm
- packing size: 1/6

EAN 4007535186601



WALLPAPER CUTTING EDGE

MR097

- stainless blade
- for cutting wallpaper
- width 60 cm
- packing size: 1/6

EAN 4007535184102



WALLPAPER CUTTING EDGE

MR100

- steel
- dimensions 200 x 5 cm
- packing size: 1/50

EAN 4007535187608



WALLPAPER CUTTING EDGE stainless

MR101

- stainless steel
- dimensions 250 x 6 cm
- packing size: 1/50

EAN 4007535152002





PASTING BRUSH

MR035

- synthetic brush
- brush part 170 x 70 x 60 mm
- packing size: 1/12
- EAN 4007535193203



WALLPAPER BRUSH

MR034

- 210 x 70mm
- packing size: 1/12
- EAN 4007535193104



WALLPAPER SPATTLE

MR098

- plastic
- trapezoidal
- conical rounded edges
- width 23 cm
- packing size: 1/6
- EAN 4007535186106



WALLPAPER ROLLER

MR095

- grooved roller part
- roll ø 35 mm
- width 45 mm, length 195 mm
- plastic handle
- packing size: 1/200
- EAN 4007535180401



WALLPAPER ROLLER

MR096

- smooth cylinder roller
- plastic handle
- roll ø 38 mm
- width 35 mm, length 200 mm
- packing size: 1/200
- EAN 4007535183501



WALLPAPER ROLLER 145 mm

MR112

- soft roller part, width 14,5 cm, Ø 50 mm
- plastic handle
- packing size: 1
- EAN 4007535181507



Made in Sweden



WALLPAPER CUTTER

HAB04

- length 220 mm
- packing size: 1/10
- EAN 7318910501115



SPARE BLADES 20 pcs

HAB28

- packing size: 1/10
- EAN 7393693200202

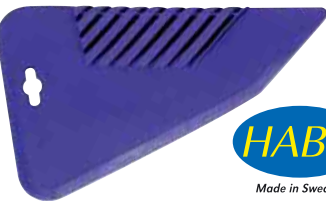


Made in Sweden

SEAM ROLLER

HAB05

- for pressing wallpaper seams
- length 220 mm, width 40 mm
- roll Ø 27 mm
- extension bar can be fitted to hand grip
- packing size: /10
- EAN 4001438013439



Made in Sweden

WALLPAPER SPATTLE

HAB27

- plastic
- width 270 mm
- packing size: /10
- EAN 7391867180022

WALLPAPER BRUSH 330 mm

HAB26

- wooden handle
- natural brushes
- packing size: /10
- EAN 7391867135237



Made in Sweden



EXTENSION telescopic

HAB16

- length 1100-2000 mm
- suits for handles for mini roller, rollers handles and grinding support
- eases the painting and grinding of roof, wall and floor
- packing size: /20
- EAN 6418914160101



Made in Sweden

HANDLES for mini roller

HAB08

- plastic handle, extension can be fitted
- for 100 mm mini roller
- packing size: /10
- HAB08**
- length 280 mm
- EAN 4001438034090

HAB09

- length 550 mm
- EAN 4001438034052



Made in Sweden



ROLLER HANDLES

HAB10

- for 180 mm rollers
- plastic handle, extension can be fitted
- packing size: /10
- EAN 4001438034076



TABLE FOR WALLPAPERING

XK6047

- foldable
 - size 2970 x 780 x 600 mm
 - also suitable for use as a service table or as a table for various purposes in sports events
 - packing size: 1
- EAN 6418914547773



MINI ROLLER 100 mm vestan

HAB21

- for water and oil colours
- packing size: /10
- EAN 7391867507102



Made in Sweden



MINI ROLLER 100 mm foam plastic

HAB19

- made of foam plastic Ø 35 mm
- for smooth surfaces
- not for acetone or thinner solubled paints
- packing size: /10
- EAN 7391867507010



Made in Sweden



MINI ROLLER 100 mm felt

HAB20

- for smooth surfaces
- length of nap 5 mm
- packing size: /10
- EAN 7391867507065



Made in Sweden



ROLLER 180 mm vestan

HAB12

- for water and oil colour
- inner Ø 38 mm
- length of nap 18 mm
- packing size: /5
- EAN 7391867505115



Made in Sweden



ROLLER 180 mm felt

HAB14

- for smooth surfaces
- inner Ø 38 mm
- length of nap 5 mm
- packing size: /5
- EAN 7391867505214



Made in Sweden



ROLLER 230 mm vestan

HAB13

- for water and oil colours
- inner Ø 38 mm
- length of nap 18 mm
- packing size: /5
- EAN 7391867505122



Made in Sweden



ROLLER 230 mm felt

HAB15

- for smooth surfaces
- inner Ø 35 mm
- length of nap 5 mm
- packing size: /5
- EAN 7391867505221



Made in Sweden



MINI ROLLER SET polyester

HAB17

- width of roller 100 mm
- packing size: 1/25
- EAN 7391867505979



Made in Sweden



MINI ROLLER SET felt

HAB22

- width of roller 100 mm
- nap 5 mm
- packing size: 1/25
- EAN 7391867101522



Made in Sweden



Made in Sweden



ROLLER SET

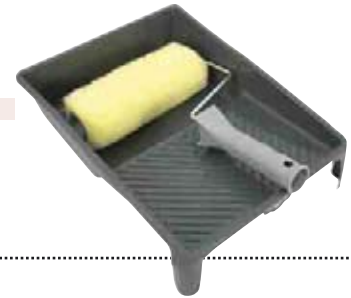
HAB18

- width of roller 180 mm
- for water and oil colours
- packing size: 1/40
- EAN 6418914411975

ROLLER SET

HAB100A

- width of roller 180 mm
- for water and oil colours
- packing size: 1/20/300
- EAN 7393197860841



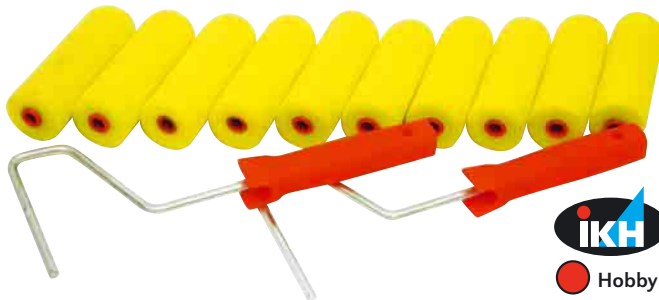
Made in Sweden



PAINT VESSEL 8 ltr

HAB29

- holds 8 ltr
- dimensions: W260, D200, H185 mm
- packing size: /25
- EAN 4001438001696



FOAM PLASTIC ROLLER SET 12-pcs

XTB12001

- 2 pcs of shafts, length 235 mm
- 10 pcs rollers, width 100 mm
- packing size: 1/40
- EAN 6418914620834



SPARE ROLLER SET 5-pcs

XTB5001

- made of foam plastic
- 5 pcs of rollers, width 100 mm
- packing size: 1/80
- EAN 6418914620797



ROYAL BRUSHES - and bristles do not get loose!



The consistency of synthetic bristles of Habo Royal brushes is the highest quality mixture of polyester and polypropylene. The bristles are very absorbent which enables smooth painting results with both oil -and water based paints.

The handle of brushes is made of strong polypropylene in which the bristles are attached with a technic which ensures the sticking of them. The materials used in manufacture are recyclable. In the process of manufacture have

not been used environmentally damaging solvents or other agents. Habo is also environmentally friendly solution.



BRUSH SET 3-pcs

HAB30

- includes 3 Royal brushes: 30-30-50 mm
- mottled, absorbent polyester/ polypropylene bristles
- packing size: 1/100
- EAN 7391867502406



BRUSH SET 3-pcs

HAB31

- incl. 3 Royal brushes: 30-50-70 mm
- mottled, absorbent polyester/ polypropylene bristles
- packing size: 1/100
- EAN 7391867503302



BRUSH SET 3-pcs

HAB32

- for outdoor painting
- incl. 3 brushes: Ø 30 mm rounded brush with natural bristles, 50 mm lacquer brush, 100 mm facade brush in which mottled, absorbent polyester/polypropylene bristles
- packing size: 1/50
- EAN 7391867505436



LACQUER BRUSHES

- mottled polyester / polypropylene bristles
- strong polypropylene handle
- packing size: 1/10

30 mm

HAB23

EAN
7391867105032

50 mm

HAB24

EAN
7391867105056

70 mm

HAB25

EAN
7391867105070



LACQUER BRUSHES oval

- high-quality, oval-formed brushes made of natural bristles
- extremely absorbent and spreadable natural bristles ensures smooth result
- packing size: 10

30 mm

HAB53

EAN
7391867500035

40 mm

HAB54

EAN
7391867500042

50 mm

HAB55

EAN
7391867500059

60 mm

HAB56

EAN
7391867500066



Royal ANGLED BRUSHES

- mottled, absorbent polyester/polypropylene bristles
- length of bristles 45 mm
- strong polypropylene handle 350 mm

30 mm

HAB33

• packing size: 1/10
EAN 7391867510034

50 mm

HAB34

• packing size: 1/10
EAN 7391867510058



ANGLED BRUSHES 970

- extremely absorbent and spreadable natural bristles ensures smooth result
- wooden handle 300 mm
- packing size: 1/5

50 mm

HAB44

EAN
7391867970050

70 mm

HAB45

EAN
7391867970074

100 mm

HAB46

EAN
7391867970104

ROYAL BRUSHES - and bristles do not get loose!



RoyalFlex BRUSHES with natural bristles

- handle can be turned to angular position
- extension can be fitted to handle
- high-quality, absorbent natural bristles enables smooth painting results
- length of bristles 60 mm
- for large surfaces: roofs, floors, walls
- packing size: 1/10

70 mm

HAB37

- thickness 25 mm
- EAN 7391867700077

100 mm

HAB38

- thickness 25 mm
- EAN 7391867700107

120 mm

HAB39

- thickness 35 mm
- EAN 7391867700121



FACADE BRUSHES

- mottled, absorbent polyester/ polypropylene bristles
- length of bristles 55 mm
- strong polypropylene handle
- packing size: 1/10

70 mm

HAB40

- thickness 20 mm
- EAN 7391867800074

100 mm

HAB41

- thickness 20 mm
- EAN 7391867800104

120 mm

HAB42

- thickness 30 mm
- EAN 7391867800128



Ergo-Flex BRUSH 120 mm

HAB48

- handle can be turned to angular position
- extension can be fitted to handle
- mottled, synthetic, absorbent bristles
- thickness 35 mm
- length of bristles 58 mm
- for painting external walls, floors, roof etc.
- packing size: 1/10
- EAN 7391867500127



STRONG
Line



PAINTER'S MASKING TAPES

• 50 m / roll

Order no.	Width	Packing size	EAN
XL101	19 mm	1/48/6000	6418914714212
XL102	25 mm	1/36/4500	6418914714229
XL104	38 mm	1/24/3000	6418914714236
XL105	48 mm	1/24/3000	6418914714243

MIRKA



PAINTER'S MASKING TAPES

• good water and solvent resistance
• operating temperature even +80° C

Order no.	Width	Length	Pack. size	EAN
MIR1150	19 mm	50 m	1/48	6416868939187
MIR1130	38 mm	50 m	1/24	6416868939200

ELENT™



FIBERGLASS TAPES

• for seaming chipboards and other fibreboards
• for fixing small holes and repairing capillary cracks

Order no.	Width	Length	Pack. size	EAN
XL011	46 mm	20 m	/60/3360	5907758599976
XL012	46 mm	50 m	/24/1344	6418914622876

STRONG
Line



AIR DUCT TAPES

Order no.	Width	Length	Packing size	EAN
XL112	38 mm	10 m	1/31/3875	6418914714274
XL110	38 mm	50 m	1/24/5400	6418914714250
XL113	50 mm	10 m	1/24/3000	6418914714281
XL111	50 mm	50 m	1/18/4050	6418914714267

STRONG
Line



ALUMINIUM TAPE

XL120

• size 50 mm x 50 m
• packing size: 1/18/4050
EAN 6418914714298